

Prüfbericht
Test report

Gurtverankerungstest nach UN-R14

*Belt anchorage test
according to UN-R14*

scopema-s-24_01

Bearbeiter:
Examiner:

A. Weißgerber
R. Walter

im Auftrag der:
in order to:
SCOPEMA

- Auftraggeber** : SCOPEMA
Customer : ZAE des Garennes, 2 Bis Avenue du Ponty
87150 Oradour sur Vayres
- Anwesende** : Mr. Hoffmann, Berberich, Wrede, Walter, Weißgerber
Present on
- Sachverständiger** : Mr. Hoffmann, ATEEL
Consultant
- Datei** : scopema-s-24_01
File
- Versuchsbedingungen** : UN-R 14, N2
Test conditions : Homologation test
- Verwendete Geräte** : Static pulling test bench, IWW, see equipment register
Devices
- Justierung/Kontrolle** : Weißgerber
Checkup
- Freigabe** : Mr. Hoffmann, ATEEL
Approval
- Fahrzeugstruktur** : Adapter frame on rigid plate
Test structure
- Prüfling** : VW T7, single seat right, 3P
Test sample : on orig. console with swivel plate no. CBTO25D3
Height adjustment: Upper position
Longitudinal adjustment: Middle position (full overlap)
Backrest adjustment: 25° Torso
Slide out: -
Seat weight: 21 kg (without swivel plate 8,6 kg, console 5 kg)
Test weight: 34,6 kg
H Punkt: -
C-line: -
Note: Upper belt point 890 mm above console
- Gurtsystem** : 3 point belt (Ar)
Type of seat belt
- Prüfkraft** : Shoulder belt: 13500 N ± 200 N
Force : Lap belt: 17620 N ± 200 N
Weight load: 2668 N ± 200 N
Pulling angle: 10,5°
- Prüfergebnis** : Nominal force about 0,2 sec: i.O., see diagram
Test result : Horizontal deformation, upper belt point: --, see schedule
Vertical deformation upper belt point (C-line): -- see video
- Bemerkung** : The seat, the swivel plate and the anchorages withstand the load.
Note : The forces are completely applied for more than 0,2 s.

Horizontal deformation upper belt point	Left [mm]	Left mid [mm]	Middle [mm]	Right mid [mm]	Right [mm]
Limit acc. ECE R14	--				
At nominal force, 0.2 sec.	--	--	--	--	--
At break	--	--	--	--	--

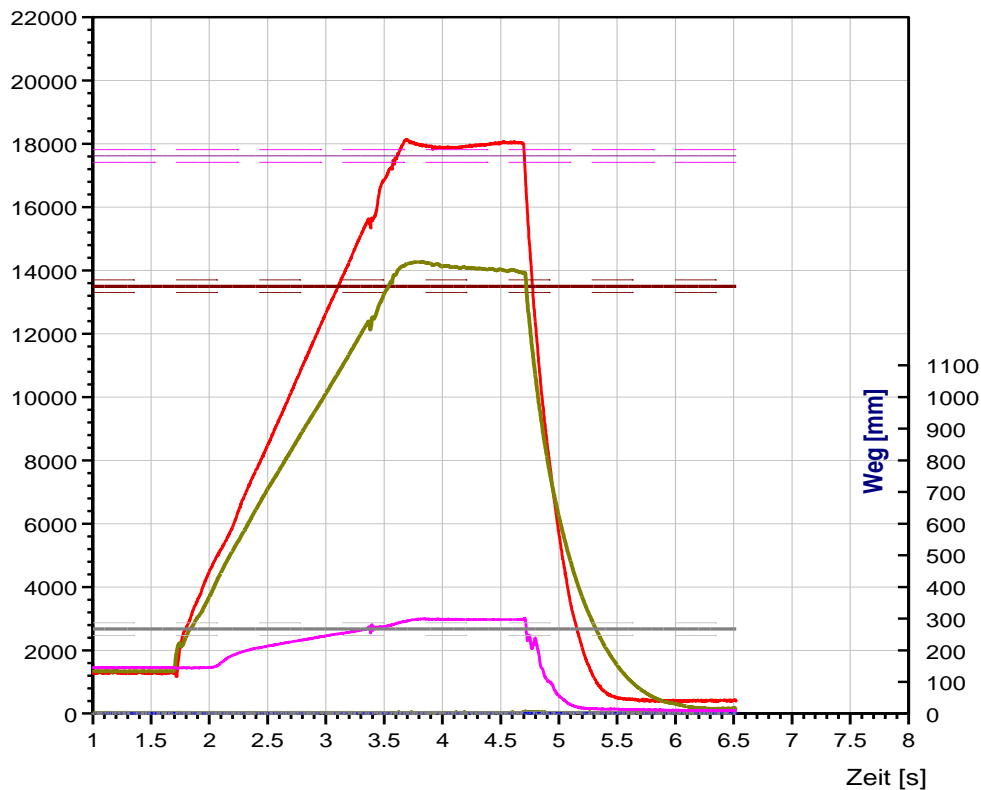
Static test according to UN R14 M1

Editor: Walter&Weißgerber

Date: 27.08.2024

File: scopema-s-24_01

Testsample: single seat, T7, 1st. row reight, swivelplate SCOPEMA

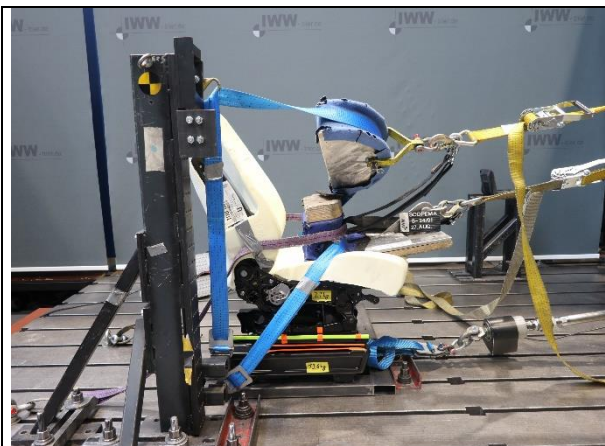


deformation left 0.2s NL - mm
deformation right. 0.2s NL - mm

Forces :
lower left: F4_S9_5_30915134
lower right: F6_S9_5_31354171
upper left: F3_S9_2_51540A
upper right: F5_S9_5_579342A
massforce: F7_2_U1_23973

min. upper force: 13500.0 +- 200 N
min. lower force: 17620.0 +- 200 N
min. massforce: 2668.0 +- 200 N

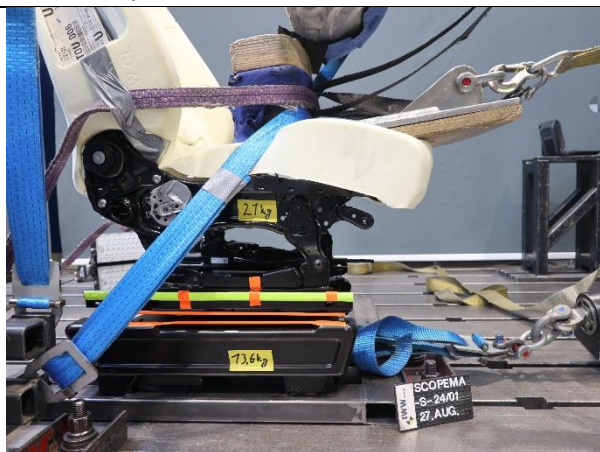
ECE R14_2er_3P_neu_8K_5W_mit Zusatzlast_M1_engl



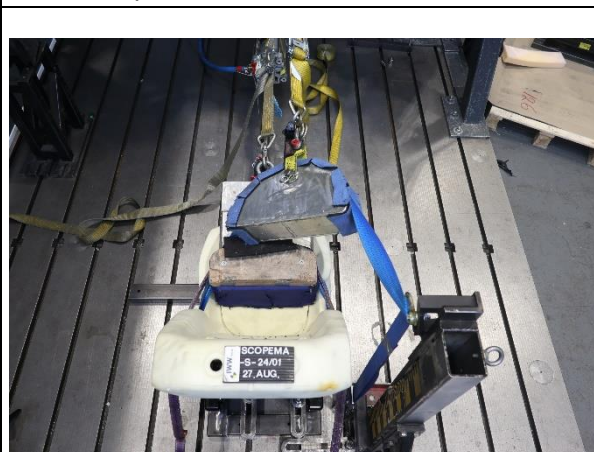
Pic.1: setup before the test



Pic.2: setup before the test



Pic.3: setup before the test



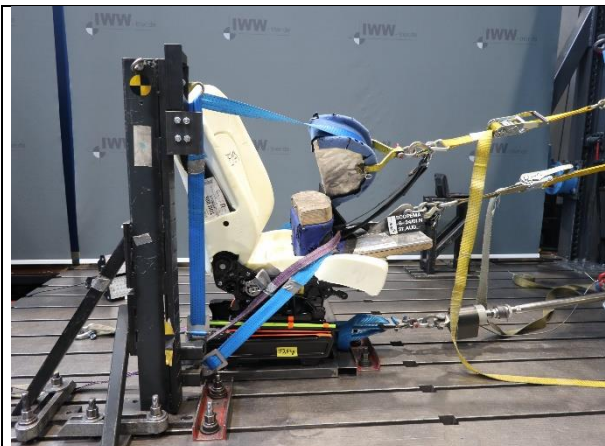
Pic.4: setup before the test



Pic.5: setup before the test



Pic.6: setup after the test



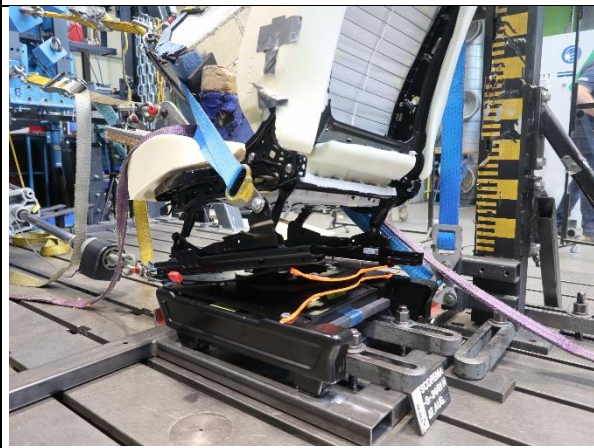
Pic.7: setup after the test



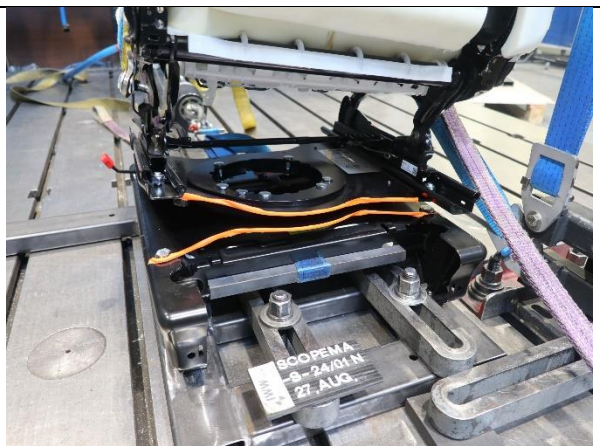
Pic.8: setup after the test



Pic.9: setup after the test



Pic.10: setup after the test



Pic.11: setup after the test



Pic.12: setup after the test

Bearbeiter: Dipl.-Ing. R. Walter
Examiner Dipl.-Ing. A. Weißgerber

Trier, 27.08.2024